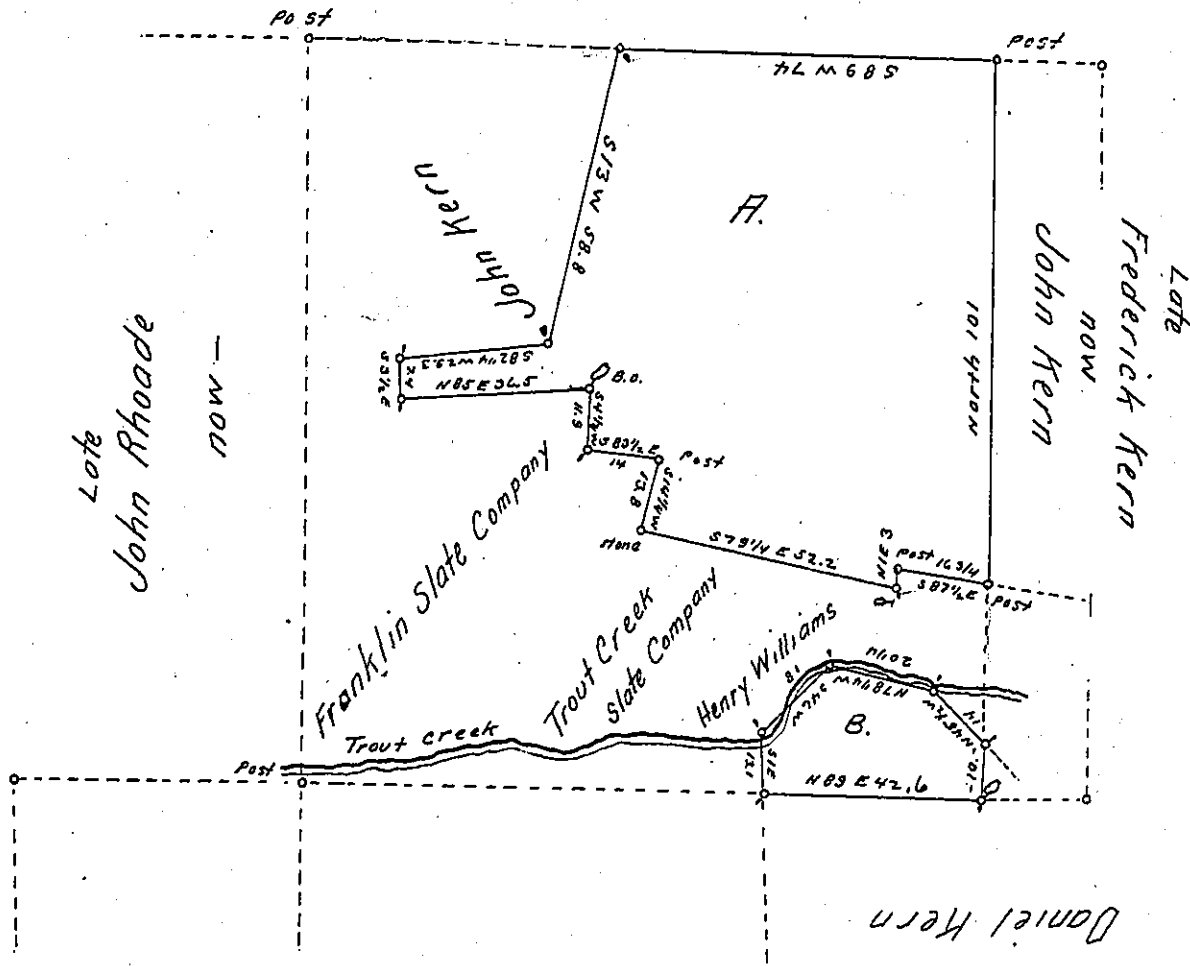


Late
John Rhoads
now
John Kern



Draft of a tract of land situated in Heidelberg (now Washington) town-
 ship in the County of Lehigh containing 51 Acres 73 perches and allow-
 ance of six per cent for roads &c. (Tract "A" containing 46⁹⁵ 73^{PS} ac. and
 tract "B" containing 5 ac. &c.) Surveyed for John Kern and Daniel Kern
 the 28th day of July 1870 being a part of a larger tract of 113 As. 5 ps.
 and Allowance originally surveyed in pursuance of a warrant
 granted to Frederick Kern dated the 14th day of May 1748.

To J. M. Campbell Esqr Geo. Blank C.S.
 Surveyor General

IN TESTIMONY that the above is a copy of the original remaining on file in
 the Department of Internal Affairs of Pennsylvania, made
 conformably to an Act of Assembly approved the 16th day of
 February, 1833, I have hereunto set my Hand and caused
 the Seal of said Department to be affixed at Harrisburg,
 this twenty seventh day of June 1905.

Goose P. Brown
 Secretary of Internal Affairs.